

**Catalogue  
2023**

[www.mhc-technology.com](http://www.mhc-technology.com)

Touch screen



### MHC 30

Ultrasonic power 120 W / 40 kHz  
 Timer 1 ~ 99 minutes  
 Tank dimensions 240mm X 140mm X 100mm  
 Weight 5 Kg

## 3 L



### MHC 30C

Ultrasonic power 120 W / 40 kHz  
 Heater power 150 W  
 Timer 1 ~ 99 minutes  
 Temperature 20°C ~ 80°C  
 Tank dimensions 240mm X 140mm X 100mm  
 Weight 5,5 Kg



### MHC 50

Ultrasonic power 120 W / 40 kHz  
 Timer 1 ~ 99 minutes  
 Tank dimensions 240mm X 140mm X 150mm  
 Weight 5.5 Kg

## 5 L



### MHC 50C

Ultrasonic power 120 W / 40 kHz  
 Heater power 150 W  
 Timer 1 ~ 99 minutes  
 Temperature 20°C ~ 80°C  
 Tank dimensions 240mm X 140mm X 150mm  
 Weight 6 Kg



### MHC 70

Ultrasonic power 240 W / 40 kHz  
 Timer 1 ~ 99 minutes  
 Tank dimensions 505mm X 140mm X 100mm  
 Weight 8,5 Kg

## 7 L



### MHC 70C

Ultrasonic power 2400 W / 40 kHz  
 Heater power 350 W  
 Timer 1 ~ 99 minutes  
 Temperature 20°C ~ 80°C  
 Tank dimensions 505mm X 140mm X 100mm  
 Weight 9 Kg



10 L

### MHC 100

Ultrasonic power 240 W / 40 kHz  
 Timer 1 ~ 99 minutes  
 Tank dimensions 305mm X 245mm X 150mm  
 Weight 9,5 Kg



### MHC 100C

Ultrasonic power 240 W / 40 kHz  
 Heater power 350 W  
 Timer 1 ~ 99 minutes  
 Temperature 20°C ~ 80°C  
 Tank dimensions 305mm X 245mm X 150mm  
 Weight 10 Kg



13 L

### MHC 130

Ultrasonic power 300 W / 40 kHz  
 Timer 1 ~ 99 minutes  
 Tank dimensions 330mm X 300mm X 150mm  
 Weight 13.5 Kg



### MHC 130C

Ultrasonic power 300 W / 40 kHz  
 Heater power 450 W  
 Timer 1 ~ 99 minutes  
 Temperature 20°C ~ 80°C  
 Tank dimensions 330mm X 300mm X 150mm  
 Weight 14 Kg



19 L

### MHC 190

Ultrasonic power 300 W / 40 kHz  
 Timer 1 ~ 99 minutes  
 Tank dimensions 330mm X 300mm X 200mm  
 Weight 16 Kg



### MHC 190C

Ultrasonic power 300 W / 40 kHz  
 Heater power 450 W  
 Timer 1 ~ 99 minutes  
 Temperature 20°C ~ 80°C  
 Tank dimensions 330mm X 300mm X 200mm  
 Weight 17 Kg



# Ultrasonic Cleaner 2 in 1

Can be used built-in or on your table

**Filling - Draining - Rinsing**

**AUTOMATIC**





### Technical characteristics

- Ultrasonic power: 200W
- Number of transducers: 4
- Cleaning frequency: 40 KHz
- Heating power: 120W
- Dimensions of the tank (mm): 290 X 164 X 195
- Overall dimensions W x L x H: 400 X 340 X 340
- Useful volume of the tank: 8L
- Color touch screen: 10 cm
- Weight: 16 kg

- USB:
- Drain:
- Function:
- Lid lock:
- Ultrasonic tank:
- Cassettes:

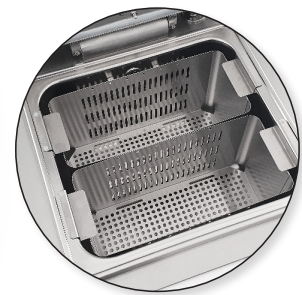
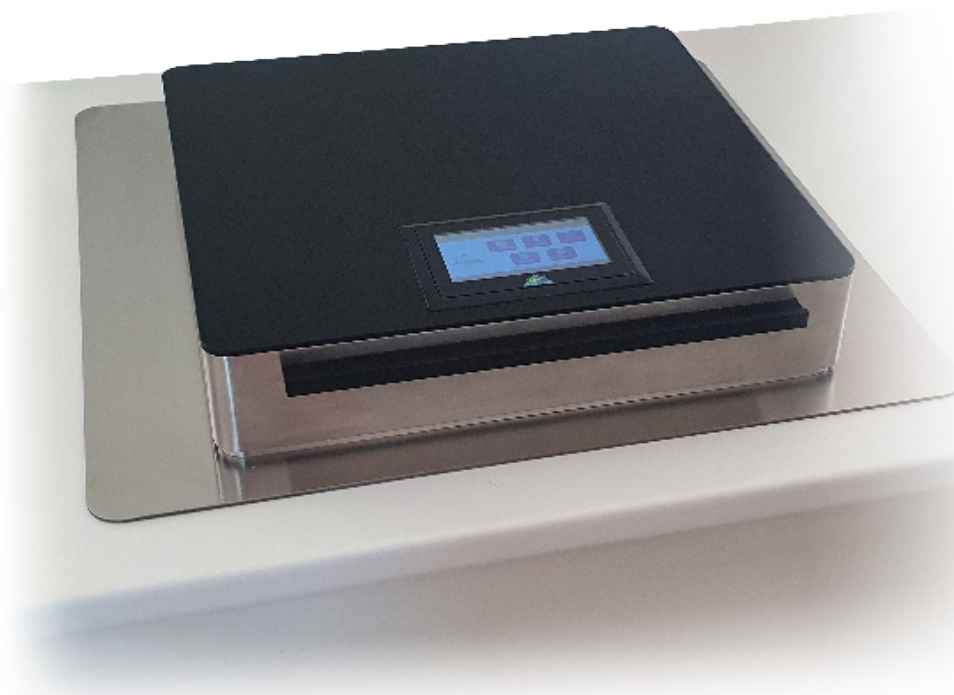
Historical cycle report  
Solenoid valve  
Degas and sweep  
Yes  
For table or built-in  
Holds up to 5 cassettes

Reference	Designation
MHC80NE	Ultrasonic cleaner 2 in 1

**2 YEARS WARRANTY**

# AutoClean®

## *Automatic washer by ultrasons*



**AutoClean®** Latest generation washer-disinfector.

Its 19L tank allows it to manage a large instrumentation capacity in one go.

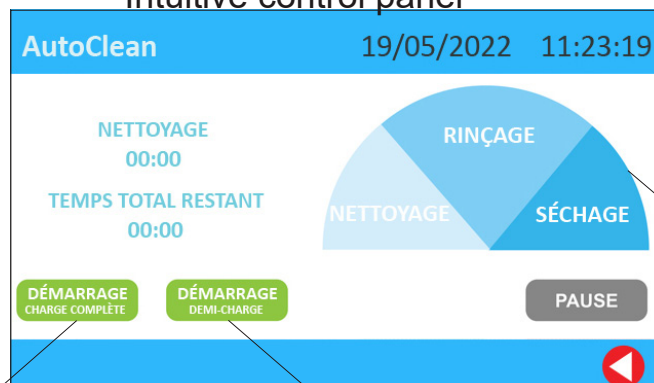
Completely automatic, it saves precious time for decontamination and washing work.

Thanks to its modern design, **AutoClean MED** will fit into all dental practices.

Its touch panel control is intuitive: it allows consultation of usage history and also gives the possibility of manual use.

- Automatic cycle
- Economic use
- Optimize your assistant's time
- Reduce the congestion

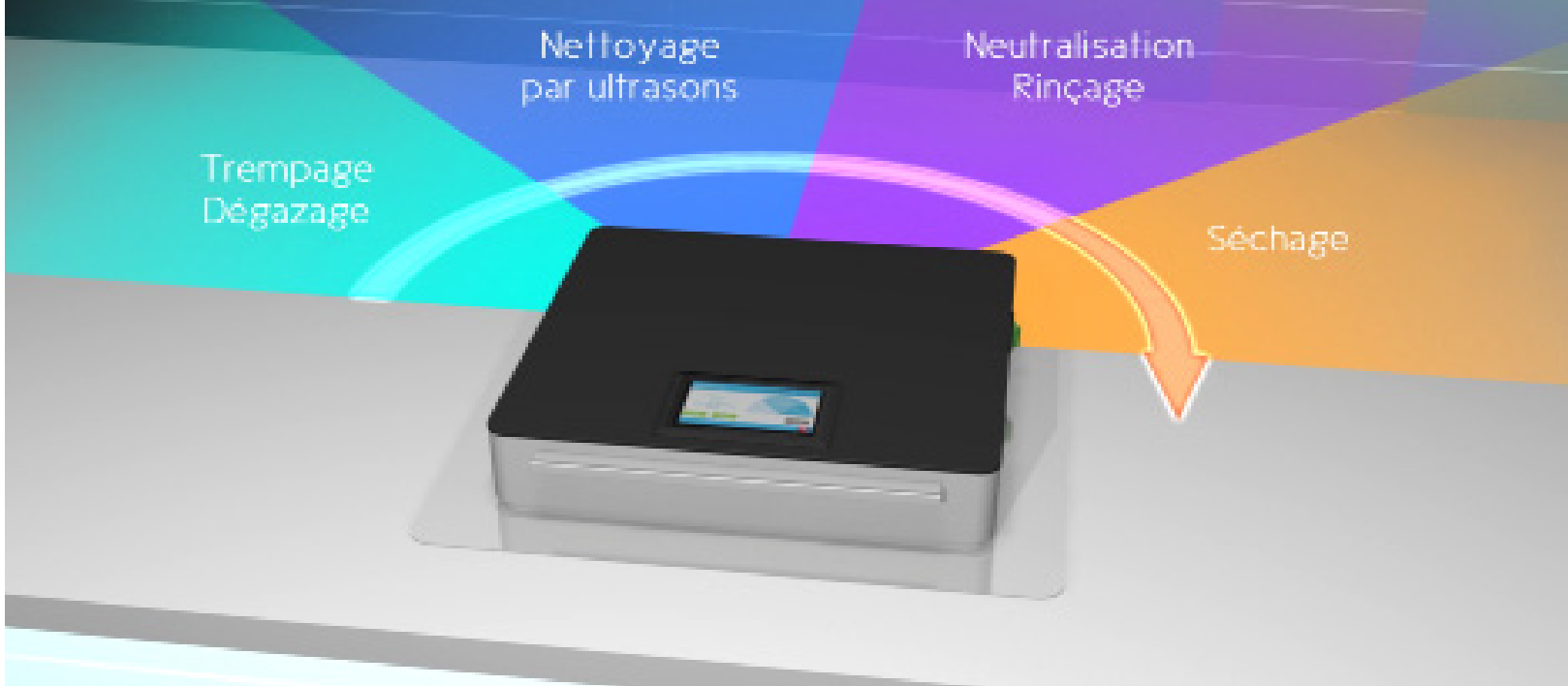
Intuitive control panel



Launching the full load

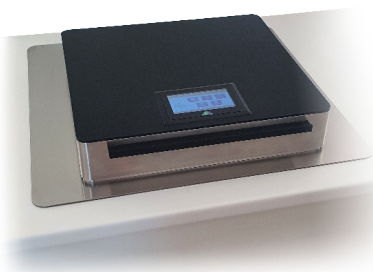
Launching the half-load

Visualization of the position in the cycle



### Technical characteristics

- Ultrasonic power: 450W
- Number of transducers: 8
- Cleaning frequency: 38 ~ 42 KHz
- Heating power: 240W
- Dimensions of the tank (mm): 325 X 300 X 200
- Overall dimensions W x L x H: 490 X 460 X 500
- USB: Historical cycles report
- Drain: Motorized valve
- Function: Manual / Automatic
- Lid lock: Stop cycle
- Volume of the tank: 19L
- Useful volume of the tank: 15L
- Color touch screen: 10 cm
- Weight: 28 kg



Reference	Designation
MHC190A	Automatic ultrasonic washer

### AutoClean NET

Disinfectant detergent for instrumentation.  
Cleaning and disinfection of medical-surgical instruments and equipment.  
Cleaning in automatic ultrasonic tanks.  
5L canister



Reference	Designation
MHC190G	AutoClean NET wash solution

### AutoClean R&N

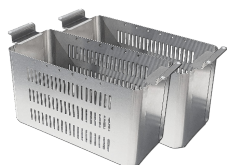
Neutralization of alkaline residues from detergents and water during the automatic washing cycle of medical-surgical instruments and medical devices.  
5L canister



Reference	Designation
MHC190F	AutoClean R&N rinsing solution

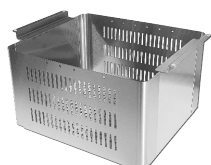
Half basket for AutoClean automatic cleaner

Reference	Designation
MHC30P19/2	Half basket / piece



Basket for AutoClean

Reference	Designation
MHC30P19	AutoClean basket





# Cleaning chain

(available in 10L, 13L and 19L, delivered with basket and lid)

- ① Decontamination tank**
- ② Recessed ultrasonic tank**
- ③ Rinsing tank**
- ④ Dryer of instruments**







# Built-in ultrasonic cleaner

## 5 L - 10L - 13L - 19L



Portable control panel



Recessed control panel

An innovative ultrasonic cleaner with a portable and/or built-in touch control panel. You can position it within a radius of 1 m around the ultrasonic tank.

This allows you to have a clean and easy to clean work area.

It has the same features and functionality as the heated standing tanks.

Draining is done directly from the touch control panel.

Reference	Volume	Frequency	Ultrasonic power	Heat power	Timer	Temperature	Tank (mm)	Weight
MHC 50E	5L	40 KHz	120 W	200 W	1 ~ 99 min	20 - 80°C	240 x 140 x 150	7 Kg
MHC 100E	10L		240 W	350 W			305 x 245 x 150	12 Kg
MHC 130E	13L		300 W	450 W			330 x 300 x 150	15 Kg
MHC 190E	19L		450 W	650 W			330 x 300 x 200	18 Kg

Technical Informations	5L	10L	13L	19L
Dimension of the tank	240x140x150	305x245x150	330x300x150	330x300x200
Required space on working area	420x320	420x480	490x460	490x460
Required space under working area	300x170x260	360x280x280	380x340x310	380x340x450
Dimensions of cutting	320x190	380x300	390x360	390x360
Dimensions of control panel	220x200x50	220x200x50	220x200x50	220x200x50
Weight	7Kg	12 Kg	15 kg	18 kg
Reference	Designation			
MHC50E	Built-in tank 5 L			
MHC100E	Built-in tank 10 L			
MHC130E	Built-in tank 13 L			
MHC190E	Built-in tank 19 L			

### ACCESSORIES

Reference	Description
MHC 30A	Beaker Support
MHC 30B	Beaker 500 ml
MHC 30P	Basket 3,5,7,8,10,13,19L



**2 YEARS WARRANTY**

*Delivered with basket and lid*



5L



10L



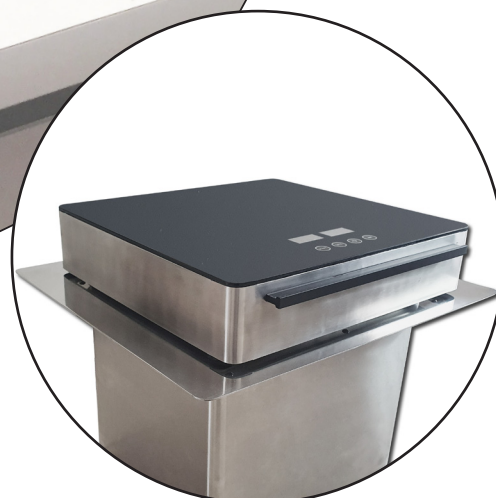
13L



19L

# Dryer MHC 130S

Dryer and  
rinsing tank of  
10L, 13L or 19L



## Fast drying of your instruments

- Baskets (10L, 13L and 19L)
- Cooling cycle

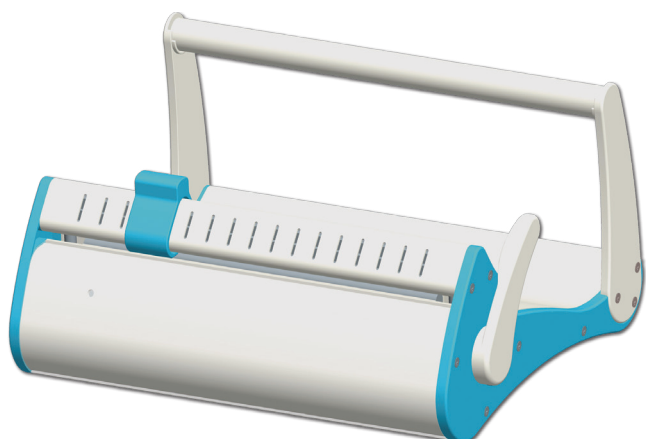
Drying and  
rinsing tank  
10L, 13L or 19L

### Technical characteristics

- Heating power: 1000W
- Glass: Tempered glass
- Control: Touch screen
- Hinge: With integrated cylinder
- Overall dimensions W x L x H: 380 x 360 x 70
- Weight: 12 kg

Reference	Designation
MHC130S	Dryer
MHC100ST	Dryer + rinsing tank 10L
MHC130ST	Dryer + rinsing tank 13L
MHC190ST	Dryer + rinsing tank 19L
MHC10T	Soaking tank 10L
MHC13T	Soaking tank 13L
MHC19T	Soaking tank 19L

# SEALING MACHINE



## Technical informations

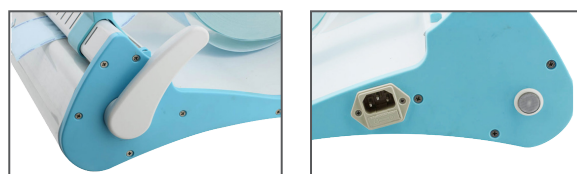
Power supply	AC 230V - 50 Hz
Power	100 W
Sealing temperature	220°
Maximum roll length	300 mm
Sealing width	12 mm
Temperature setting	Automatic
Pre-heating	3 min
Dimensions (mm)	440 x 340 x 210
Weight	7,5 kg

Reference	Designation
MHC521	Sealing Machine

This new Sealing machine combines a modern design and a robust fabrication. Completely made of aluminum it is resistant to all temperatures.

The MHC 521 offers an automatic heating system control as well as a light which indicates the end of the weld.

## Material: Aluminium

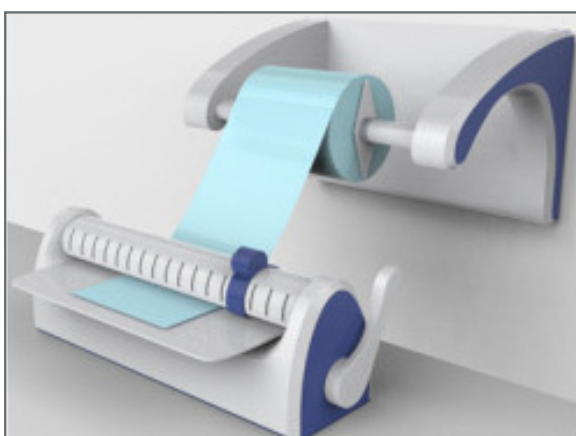


The MHC 522 heat sealer is microprocessor controlled.

The temperature is automatically adjusted to prevent burning of the sterilisation bags.

A beep sound and a light informs when the sealing operation is finished.

## Material : Coated Steel

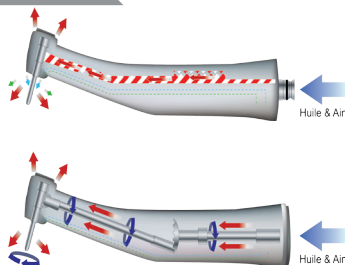


## Technical Information

Power supply	AC 230V - 50 Hz
Power	100 W
Sealing temperature	220°
Maximum roll length	300 mm
Sealing width	12 mm
Temperature Setting	Automatic
Pre-heating	3 min
Dimensions (LxHx)	460 x 380 x 290 mm
Material	Coated steel
Weight	8 kg

Reference	Designation
MHC522	Sealing machine

## CLEANING AND LUBRIFICATION



### Turbines

The most important components of the turbine as well as the air- and water tubes are thoroughly cleaned and lubricated.

### Handpiece

The handpieces integrate mechanisms through which the speed of the rotations can be changed. These require a regular maintenance in order to conserve their initial operating performance.

Good and regularly cleaning and care are necessary to ensure the long-life cycle of your instruments.

MHC guarantees an automatic cleaning and lubrication.

Its ease of use makes it accessible for everyone.

### Lubricator Machine

Power supply	AC 230V - 50 Hz
Air Pressure	350 ~ 600 Kpa
Reservoir capacity	350 ml
Dimensions	285 x 355 x 275
Weight	7,5 kg

Reference	Designation
MHC350	2 Turbines 1 Counter-angles
MHC350A	1 Turbines 2 counter-angles

## WATER DISTILLER

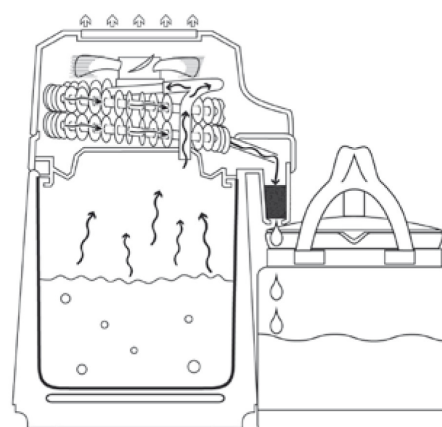


**The Water distiller MHC** produces perfectly pure water by distillation. The machine heats the water up to 100° which rises up as steam to the condenser.

The process of distillation kills all bacteria, viruses and other water existing micro-organisms, while the other materials (solid or liquid as e.g. scale, pesticide, ...) remain in the container.

In the serpentine cooler the steam converts to water before it is let through an activated carbon filter in a second cleaning process.

## Security of DAC autoclaves



### Water distiller

Power supply	AC 230V - 50 Hz
Power	750 W
Tank capacity	4L
Speed distillation	0,7 to 1L/h
Safety temperature	160°
Weight	4 Kg

Reference	Designation
MHC400	Water distiller
MHC400A	Activated carbon
MHC400B	Decalcifier





## **MHC Technology**

**1001 chemin Hugues Béranguier**

**06610 LA GAUDE (France)**

**Tel : +33 (0)4.93.58.17.16**

**Fax: +33 (0)4.93.58.14.75**

**email: [info@mhc-technology.com](mailto:info@mhc-technology.com)**

**[www.mhc-technology.com](http://www.mhc-technology.com)**